



RC/PIO News & Notes

June 18, 2026

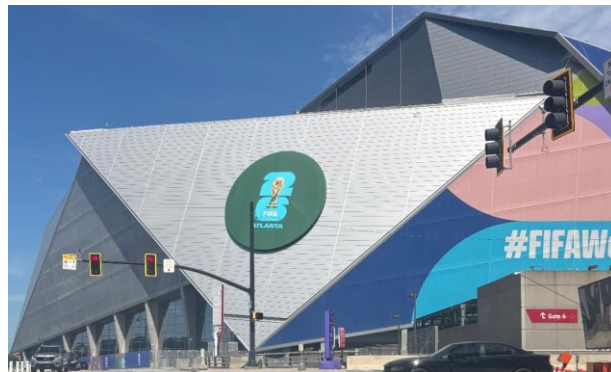
A Weekly Update from **Eric Jens, Risk Communicator** – Georgia Department of Public Health. Contents may be FYUO – For Your Use Only

News & Notes

Tomorrow is the Juneteenth state holiday; hence, News and Notes is going out today. The FIFA World Cup events in Atlanta have added to what would already be a busy week, thus leading to a good variety of topics to highlight.

FIFA

The Fédération Internationale de Football Association (FIFA) matches for World Cup 2026 began in Atlanta on Monday. Matches, Fan Fests, and other activities will continue through July 15. After countless hours of preparation, we are now getting a look at what this collaboration has become. Following the informational updates in the Web EOC events for both DPH and AFCEMA, attending twice-weekly Emergency Support Function-8 meetings, receiving regular BioWatch updates, obtaining Fan Fest credentials, and working shifts at the Atlanta Public Safety Joint Information Center all help provide the overall picture.





Media Training

We had a great opportunity on Tuesday to spend the day at the DeKalb County Board of Health to

participate in a media training conducted by Dr. Joe Trahan. We gained valuable insights that will enhance future iterations of the DPH Media / Crisis and Emergency Risk Communication training. Equally valuable was the opportunity to connect in person with multiple district communicators and program leaders who will enhance response capabilities moving forward.

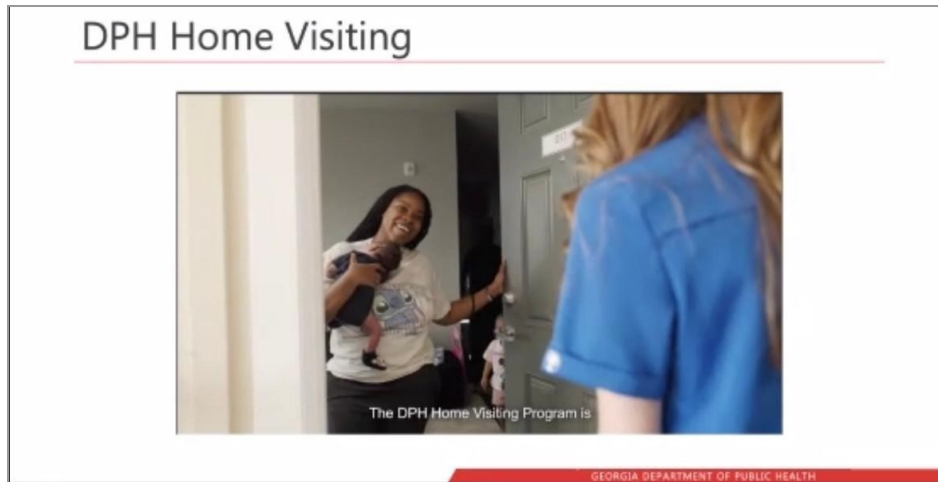
Measles Tabletop Exercise

The DeKalb Health District hosted a measles tabletop exercise on Thursday with a scenario that escalated from one suspected case to an outbreak of more than 200 cases. Representatives of DPH district and state offices talked through the simulated events as they unfolded. Epidemiology, Environmental Health, Nursing, Immunizations, Communications, and Emergency Preparedness, among others, were represented, with players describing how they would interact and determine the best potential actions.



State Board of Health meeting

The June Board of Public Health meeting on Tuesday featured detailed budget updates from William Bell. Following those updates, the state Home Visiting Program was highlighted. Among the accolades for recent successes was the recently created [DPH Home Visiting Program video](#) that captures the true value of this work.



June state DPH EPR meeting

Thanks to LaKieva Williams and Sean Greathead for gathering the updates and images of this month's state DPH EPR staff meeting:

Presenters included Morgan Burrell, Kalie Burke, and Chris Owen. Morgan offered an overview of multiple collaborations with various agencies and the Dialysis Workgroup. Kalie presented Disaster Mental Health and focused on resources and training opportunities. Chris provided an overview of the roles and responsibilities of DPH EPR Duty Officers.



June EP Activities

Thanks to Lauren Robinson for sending the pictures and highlights from this month's activities. This included a Proactive Action Decision-Making seminar delivered by Emergency Management Consultant Tab Troxler. Later in the month, Ricky Shutter and Sean Graham provided a radiation and training workshop.



HURREVAC

Four days of online training for the HURREVAC hurricane digital decision platform were held Monday through Thursday this week. New features this year include earlier impact forecasts, more detailed inland impact data, and an expanded 'experimental' cone of uncertainty. This experimental cone uses ellipses instead of circles, which slightly expands the zone but improves accuracy from the 67th to the 90th percentile. HURREVAC is one of multiple tools that can be effective in providing advance notice as hurricane season in Georgia heats up during the next three months.

Cone of Uncertainty

Inclusion of Inland U.S. Watches and Warnings

- NHC cone of uncertainty with inland U.S. watches and warnings becomes operational in 2026
- **Key features:**
 - Inland U.S. watches and warnings
 - One shading for entire 5-day cone
- Better representation of both coastal and inland wind risk

Hurricane Milton
 Formed: October 08, 2024
 4 AM CDT Advisory 13
 NWS National Hurricane Center

Current information: X
 Center location 22.3 N 88.9 W
 Maximum sustained wind: 150 mph
 Movement ENE at 12 mph

Forecast
 Tropical Cyclone
 Sustained at: 5:39:73 mph

Potential track area:
 Day 1-5

Watches:
 Hurricane Watch (Yellow)
 Tropical Storm Watch (Orange)
 Hurricane Watch & Tropical Storm Warning (Blue)

Warnings:
 Hurricane Warning (Red)
 Tropical Storm Warning (Purple)

Department of Commerce | National Oceanic and Atmospheric Administration | weather.gov

Next Week Preview

Another FIFA-packed week awaits with more matches and events in Atlanta and surrounding areas. Summer officially starts Sunday morning at 4:24.

About "News & Notes"

"News & Notes" is a weekly communication for risk communicators and public information officers across Georgia's 18 public health districts. The goal of this communication is to enhance preparedness by exchanging information on significant events, training, and other planned activities. Some information herein may be considered FYUO (For Your Use Only). Please be judicious when forwarding. For questions, comments, or to submit information for inclusion, contact Eric Jens at Eric.Jens@dph.ga.gov.

We protect lives.

Georgia Department of Public
Health | dph.ga.gov



Reader Advisory Notice: Email to and from a Georgia state agency is generally public record, except for content that is confidential under specific laws. Security by encryption is applied to all confidential information sent by email from the Georgia Department of Public Health (DPH). This message is only intended for specific recipient(s) and may contain privileged, private or sensitive information. If you received this message in error, please delete it and contact me.

Georgia Department of Public Health | 200 Piedmont Ave, SE | Atlanta, GA 30334 US